



# DEVELOPMENTAL DISABILITIES ASSOCIATION

## COMMUNITY IMPACT REPORT



Developmental  
Disabilities Association

# ABOUT DDA



# OVERCOMING OBSTACLES ENCOURAGING ABILITIES

The Developmental Disabilities Association is a community living agency that provides over 50 community-based programs and services to children and adults with developmental disabilities and their families in Vancouver and Richmond.

Since 1952 we have created extended networks of support, invested in individuals with developmental disabilities, and strived for an inclusive and safe community.

Over 1,800 individuals and families in the Vancouver and Richmond area are served by DDA every year.

WE ARE



**NON  
PROFIT**

WITH OVER



**500**  
EMPLOYEES

SUPPORTING



**1,800**  
INDIVIDUALS

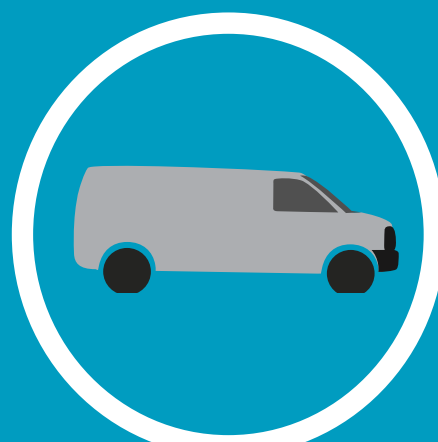
ALL OF THE **PROFITS** FROM OUR  
**CLOTHING COLLECTION BUSINESS** GO TO  
PEOPLE WITH DEVELOPMENTAL DISABILITIES WHO NEED



HOUSING



EMPLOYMENT  
PROGRAMS



TRANSPORTATION



TECHNOLOGY



LONG TERM  
STABILITY



SUPPORT

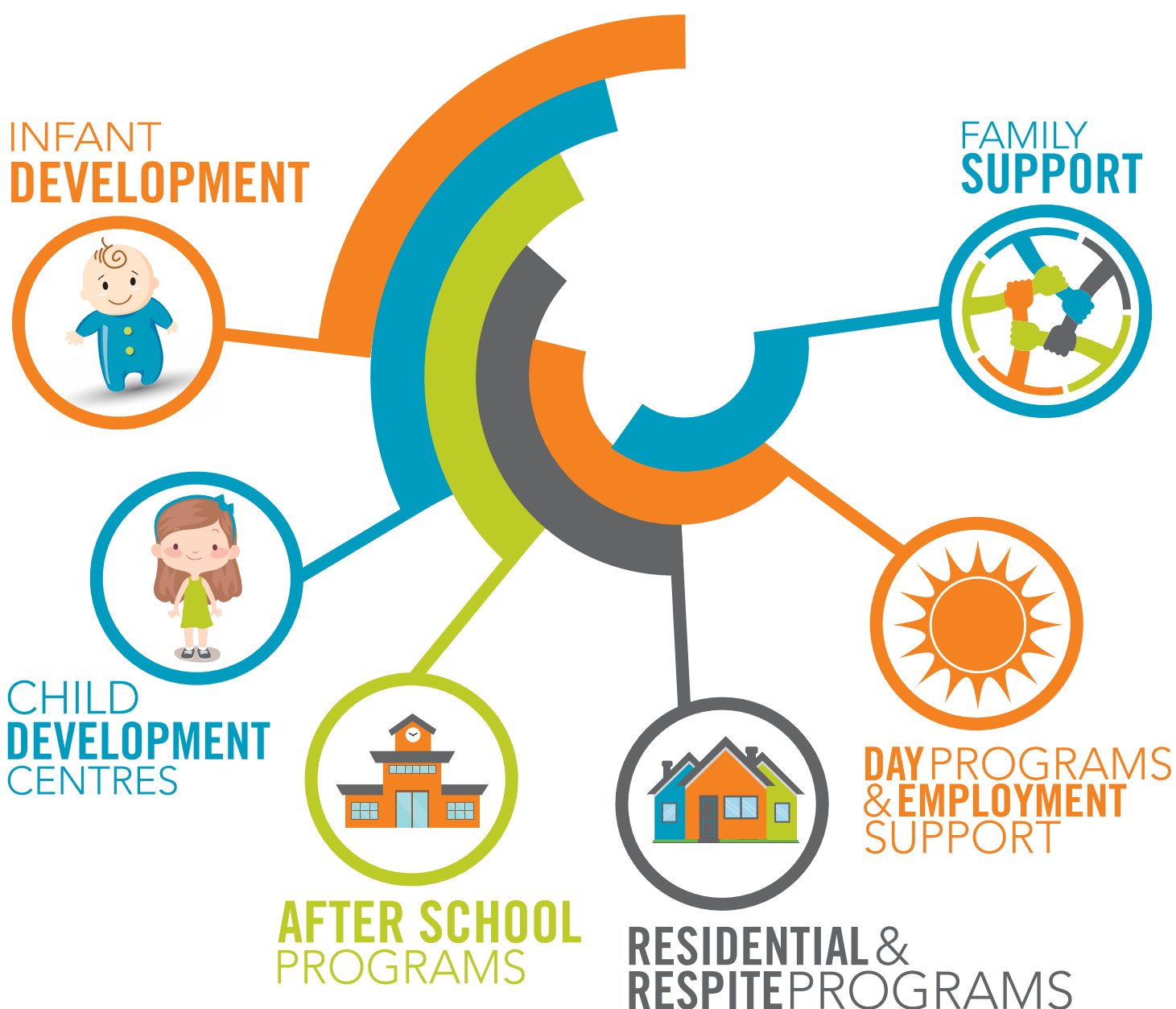
**& MORE**



OUR PROGRAMS COVER THE

# LIFECYCLE

OF AN INDIVIDUAL WITH **DEVELOPMENTAL  
DISABILITIES**





WE ARE CONDUCTING  
**CUTTING  
EDGE  
RESEARCH**  
WITH



**JDQ Systems Inc.**



UNIVERSITY OF  
**TORONTO**

WE SPONSOR AN  
**ANNUAL  
SCHOLARSHIP**  
AWARDED TO A STUDENT WITH  
**A DISABILITY**  
WHO HAS  
WORKED HARD TO  
**GRADUATE**  
AT EACH  
SECONDARY SCHOOL  
**IN VANCOUVER & RICHMOND**





# CASH 4 CLOTHES

CLOTHING DRIVE FUNDRAISER

COLLECT  
**75-100 BAGS**  
AT ONE TIME & RECEIVE  
**\$2.00**  
PER BAG

COLLECT  
**150+ BAGS**  
AT ONE TIME & RECEIVE  
**\$3.00**  
PER BAG

ONCE YOUR  
FUNDRAISER  
IS OVER WE WILL  
**PICK IT  
ALL UP**

**IT'S EASY!  
WE HELP!**

# DDA SPONSORS



VANCOUVER CANADIANS

# NIGHT AT THE NAT



# &

## SUPPORTS

BASEBALL BC'S

# CHALLENGER BASEBALL

A DIVISION OF BC BASEBALL THAT  
PROVIDES OPPORTUNITY FOR CHILDREN  
WITH DISABILITIES TO ENJOY THE FULL  
BENEFITS OF PARTICIPATION IN BASEBALL

WE FUND  
MANY OF OUR  
**INITIATIVES**  
THROUGH OUR  
**CLOTHING  
DONATION  
PROGRAM**

THERE ARE

250

ACTIVE  
BIN  
HOSTS IN  
THE

LOWER  
MAINLAND



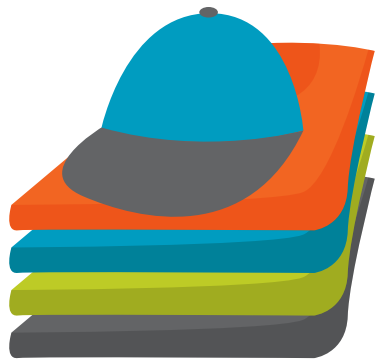
ALL BINS ARE HOSTED THROUGH AGREEMENTS WITH PROPERTY OWNERS  
WE THANK OUR BIN HOSTS FOR BEING PART OF THE DDA FAMILY

THROUGH OUR CLOTHING DONATION PROGRAM

**DDA** DIVERTS MORE THAN

**2,722** TONS [ THAT IS 6 MILLION POUNDS ]

OF  
TEXTILES  
AND  
HOUSEWARES



FROM LANDFILLS  
**EVERY YEAR**

WHICH **SAVES**

LOCAL MUNICIPALITIES <sup>UP TO</sup>

**\$400,000**

**ANNUALLY**

# DID YOU **KNOW?**

THE AVERAGE  
NORTH AMERICAN



**THROWS  
AWAY**

**81**

POUNDS  
OF **CLOTHING**  
PER YEAR





Supporting individuals with developmental disabilities  
Developmental Disabilities Association

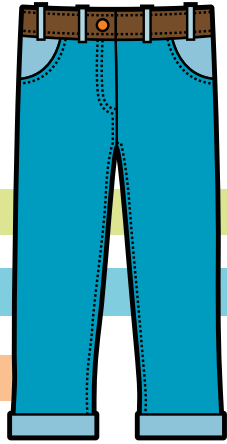
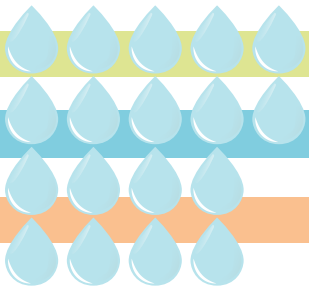
**100%**  
**NONPROFIT**  
**OWNED & OPERATED**

Be Local . Think Local . Give Local

IT TAKES

1800

GALLONS OF  
WATER

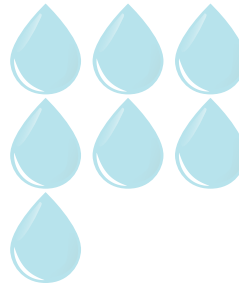


TO  
MAKE

1 PAIR OF  
JEANS

700

GALLONS OF  
WATER



TO  
MAKE

1 T-SHIRT



BY RECYCLING  
CLOTHING, **DDA**  
**REDUCES WASTE**  
AND PROMOTES  
THE **REUSE OF**  
**CLOTHING**

# AS A **SOCIETY** WE



# 400%

MORE CLOTHING  
THAN WE DID  
**20 YEARS** AGO

A donut chart with an orange border and a white center. The number "76%" is displayed in the center. The chart is filled with orange, with a small gap at the top.

**76%**

OF PEOPLE WILL  
**DISPOSE**  
OF AN ITEM IN  
**LESS THAN**  
**5 YEARS**

A donut chart with a blue border and a white center. The number "80%" is displayed in the center. The chart is filled with blue, with a small gap at the top.

**80%**

OF DONORS  
**TRAVEL**  
**15 MINUTES**  
(OR LESS)  
**TO DONATE**

A donut chart with a green border and a white center. The number "50%" is displayed in the center. The chart is filled with green, with a small gap at the top.

**50%**

OF PEOPLE WILL  
**DONATE**  
INSTEAD OF  
**THROWING OUT**  
UNWANTED GOODS



# FAST FASHION

IS THE FASTEST  
GROWING CATEGORY  
**OF WASTE**

AND IS OFTEN MADE OF  
FIBRES THAT DO NOT  
**NATURALLY  
DECOMPOSE**

& **73%** OF



**MILLENNIALS**

WOULD PAY MORE FOR  
**SUSTAINABLE**  
PRODUCTS

# TEXTILES

ARE ONE OF THE

## FASTEST GROWING

WASTE  
AREAS  
IN



## METRO VANCOUVER

ACCOUNTING FOR

# 5%

OF TOTAL  
GARBAGE  
PRODUCED

# DONATIONS

LIKE YOURS ENABLE US TO PROVIDE

**INCLUSIVE OPPORTUNITIES**

SUCH AS OUR

**SOCIAL ENTERPRISE**

# STARWORKS

**PACKAGING & ASSEMBLY**

AS WELL AS

**FAMILY SUPPORT**

# PROGRAMS



# HOW TO DONATE

WEBSITE

## REQUEST A PICK UP



EMAIL

PHONE

### DONATION STATION

2643 No. 5 Rd  
Richmond, V6X 2S8  
Weekdays  
7:00 – 3:30

## DONATION STATIONS



DROP OFF YOUR DONATIONS

DDA IS  
**100%**  
NONPROFIT

### DDA HEAD OFFICE

100-3851 Shell Rd  
Richmond, V6X 2W2  
Weekdays  
8:30 – 4:30

# CASH4 CLOTHES

A great way to raise money for your organization or team!



A great fundraiser for:  
Schools/PACs  
Sports Teams  
Swim Clubs  
Church Groups  
After-school groups  
Choirs

Part of a townhouse/condo strata? Host one of our clothing bins to support your local non-profit.

## CONTACT

[www.develop.bc.ca](http://www.develop.bc.ca)  
604-273-4332

## JOIN US



Contribute to your Community by Hosting a Bin

Contact:  
[clothing4dda@develop.bc.ca](mailto:clothing4dda@develop.bc.ca)

## WHAT YOU CAN DONATE

Clothes  
Table Liners  
Towels  
Accessories (ties, hats, belts)  
Bathing Suits  
Books  
CDs, DVDs & Records

Glassware  
Pots & Pans  
Sleeping Bags  
Small Appliances  
Sporting Gear  
Stationary Supplies  
Toys & Games

